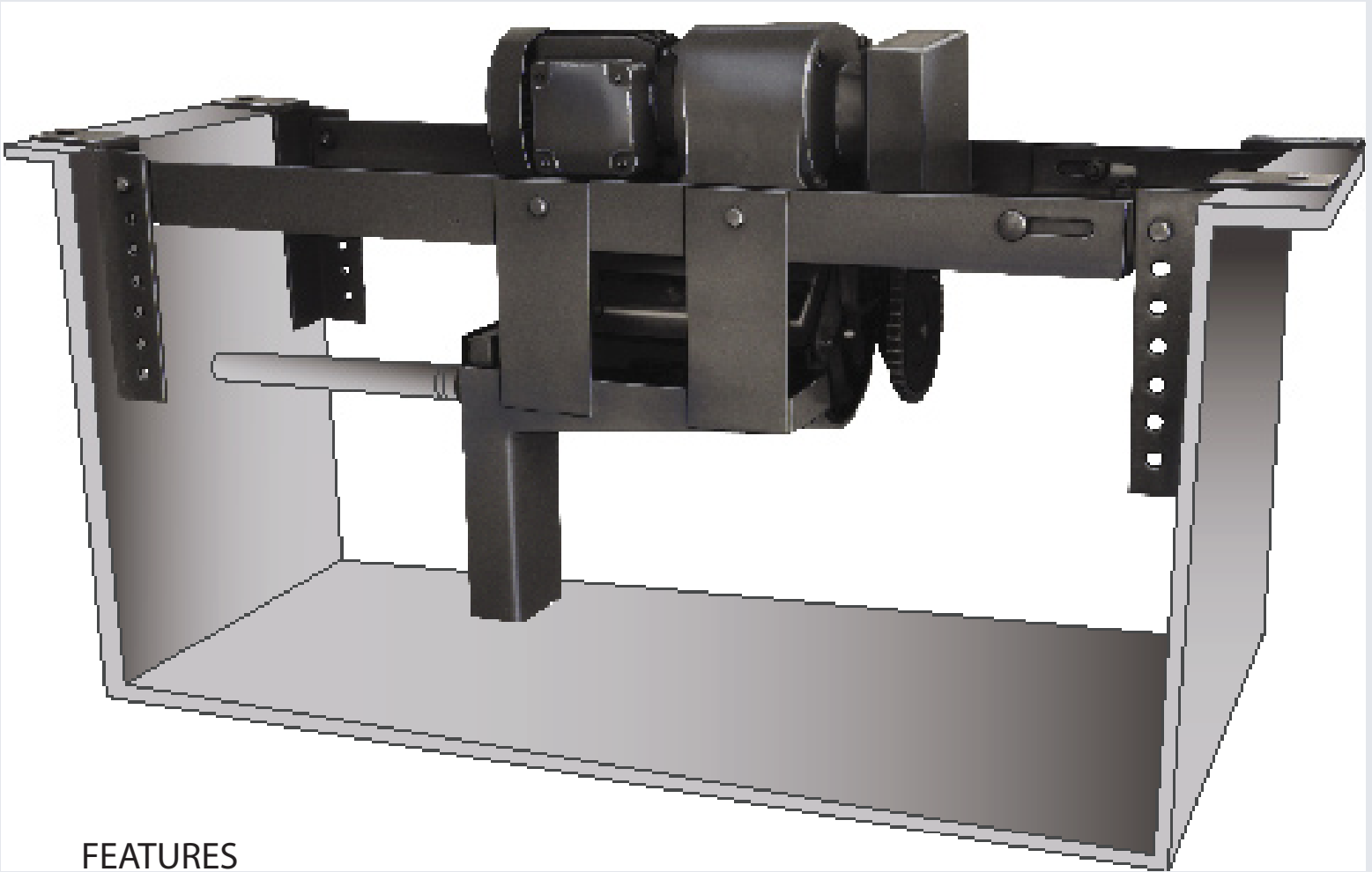


# SKIMMO®

MODEL RM

*Automatic Oil Skimmer*



## FEATURES

- Extracts minimum of four (gph) of oil at 180° F solution temperature-even more at lower temperatures
- Extracted oil up to 99% free of water - reusable after reprocessing
- Engineered to application for difficult tank mounting
- Capable of removing different types of oil and grease
- Suitable for highly corrosive solutions; parts in contact with the solution are stainless steel and Teflon®
- Saves on water replacement and cleaning compound costs
- Reduces frequency of tank cleaning
- Automatic operation
- Rapid return on investment
- Two year warranty on materials and workmanship
- One year warranty on electric gear motor

# SKIMMO® RM

## How Skimmo® Operates

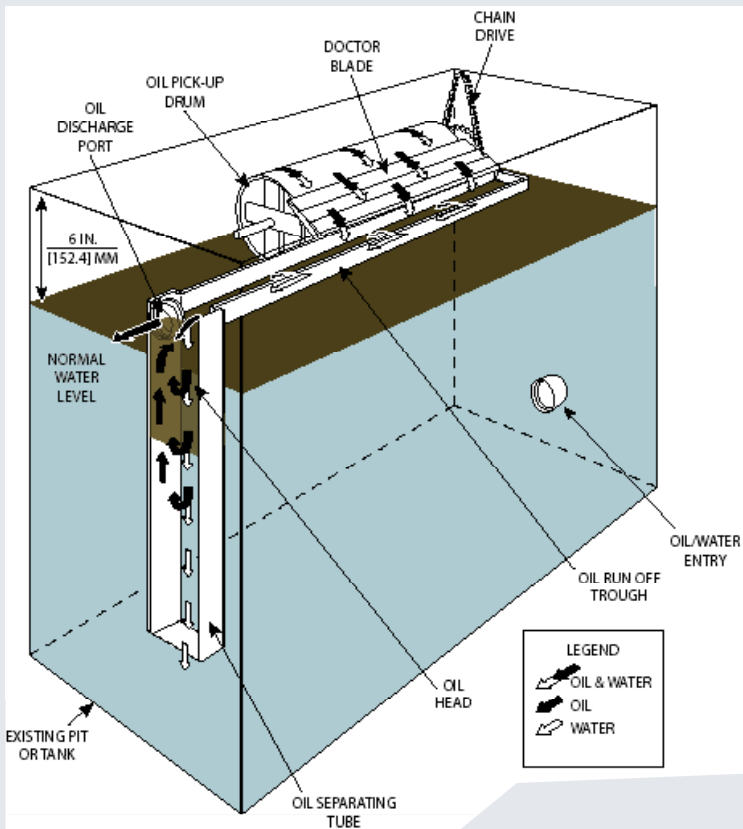
1. Oil and water are picked up from the surface of the tank by the pick-up drum by using surface tension, fed and deposited in the run-off trough by the doctor blade and emptied into the oil separating tube.

2. Oil, because of its lighter specific gravity rises to the top of the separating tube, and is drained off by gravity through the oil discharge port (which is higher than the normal solution level.) Water and washing solution, because of their heavier specific gravity, drop below the oil level and return to the tank through the bottom opening of the separating tube for reuse.

3. If the tank has a load immersion, or similar cycle, the amount of solution displaced by the immersed load must

not be allowed to rise more than 2.5" (63.5 mm) above the normal liquid level. If the solution level rises more than 2.5" (63.5 mm) above the normal solution level, a ¾" solenoid valve should be installed in the oil discharge line to prevent water from being discharged through the oil discharge port during the immersion cycle.

4. CAUTION: Since the oil discharge by the SKIMMO® (if installed according to instructions,) can contain up to 1% water, it is extremely important that any quench oil recovered and intended for reuse be properly processed to remove all remaining water. Special precautions must be taken before any of the separated, recovered oil is reused in your plant because of the many possible contaminants which will not be separated by the SKIMMO®.



SPECIFICATIONS RM		
DRUM LENGTH	8"	14"
DRUM TYPE	304 STAINLESS	304 STAINLESS
OIL DISCHARGE	LEFT/RIGHT	LEFT/RIGHT
MOTOR	¼ HP 208-230-460 1 or 3 Phase 60 Hz TEFC	½ HP 208-230-460 1 or 3 Phase 60 Hz TEFC
DOCTOR BLADE	TEFLON®	TEFLON®
BUSHINGS	UHMW	UHMW
TANK SPAN	MIN. 18" MAX. 72"	MIN. 24" MAX. 96"
TANK DEPTH	ANY POINT DESIRED	ANY POINT DESIRED
UNIT WEIGHT	42 LBS	55 LBS
PAINT	MACHINE TOOL GRAY ENAMEL	

### Available Options

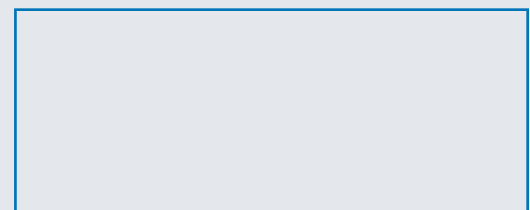
- Unit available in 100% 304 or 316 stainless steel at an additional charge
- Optional liquid level control available at an additional charge
- Single phase 380 V and 575 V motors available at an additional charge
- Engineered systems available



WWW.HUDSONIND.COM

439 NEISLER STREET  
SHELBY, NC 28152 USA  
OFFICE: 704-480-0014  
FAX: 704-482-9881

E-MAIL: INFO@HUDSONIND.COM



Your Local Sales Contact